

If you run a web content that's intended to usher in enquiries, bookings, or revenues, you should always deal with Google Lighthouse like a performance file, no longer a shallowness dashboard. Lighthouse ratings can nudge you in the direction of turbo pages, cleanser code, and better proper global reviews. The catch is that chasing a number may lead you into negative layout judgements in case you do no longer join functionality metrics to real user behaviour.

I've visible Southend corporations with gigantic branding get allow down with the aid of heavy pages, gradual scripts, and lazy loading that backfires. I've also visible the other, sites that have been "speedy" in checking out yet difficult on cellphone, considering the overall performance work unnoticed UX. The purpose is balance: construct a web site design southend company might be proud of, and make it resilient adequate that Lighthouse improves with no harming conversion.

Let's talk about what tremendously movements Lighthouse ratings, learn how to apply it to a web design southend assignment, and wherein teams steadily get it incorrect.

Lighthouse rankings are a proxy, not the conclude line

Lighthouse measures overall performance, accessibility, most beneficial practices, and SEO in a means that's powerfuble for development. But it isn't very the similar element as "my users think inspired." Lighthouse runs managed audits simply by simulated conditions. Real users have diversified units, network great, and patience.

Still, you'll be able to use Lighthouse as a safe checklist of in all likelihood concerns. When you notice low overall performance scores, that you may most of the time hint it to things like high JavaScript, render blocking elements, uncompressed pix, or sluggish server response. When the accessibility or prime practices scores dip, you could spot HTML issues that ordinarily also harm clarity and usability.

For a web layout brand southend or a website design southend group running with nearby buyers, this subjects considering the fact that so much enterprises are juggling advertising and marketing, calls, and operations. They should not find the money for a slow web page that necessities regular babysitting. A functionality targeted build reduces friction for all people.

Where Lighthouse facets in the factual world (and why Southend sites get hit)

Many internet layout southend on sea projects share the related styles, chiefly whilst a website has been up-to-date over time.

First, pages became collage model. A hero slider here, a advertising and marketing video there, a number of third party widgets for comments, chat, kinds, and tracking. Each component may well be wonderful on its possess, yet jointly they inflate the payload and complicate loading.

Second, snap shots pass unmanaged. A wide hero symbol uploaded "as is" can quietly upload megabytes to the primary load. It does now not matter if the graphic seems sharp, the browser nevertheless has to down load it. Lighthouse punishes that in an instant through metrics like Largest Contentful Paint and Total Blocking Time.

Third, subject defaults and plugins do plenty of work inside the historical past. This is prevalent with web design southend setups outfitted without delay from templates. It's no longer that templates are dangerous.

It's that plugin ecosystems grow messy: assorted libraries that overlap, scripts that run on each and every web page, and CSS that bloats the quintessential route.

Finally, functionality paintings is regularly break away layout work. A web page designers in southend workforce might also make the web page pleasing, however later optimisation will become a patch, not a plan. Lighthouse rewards designs that were outfitted with efficiency constraints in mind from day one.

Start with the question: which pages on the contrary subject?

Before touching code, you desire to recognize where Lighthouse attempt produces enterprise effect. Most of the time, you should start off with pages that pressure enquiries.

Lighthouse audits each confirmed view, so if you happen to simply optimise obscure pages, your score may well advance with no improving calls. For a web design southend on sea buyer, "industry principal" mainly includes:

- the homepage
- product or service touchdown pages
- region pages, once you serve a number of areas
- key lead catch pages, like touch or booking
- weblog posts that bring seek traffic

In practice, you have to run Lighthouse on these templates and on the top visitors pages from analytics. If you employ a staging environment, you would examine in the past and after transformations with out risking conversions.

The performance mechanics that circulation Lighthouse most

You can make Lighthouse leap critically with the aid of focusing on the few levers that have a tendency to dominate.

1) Largest Contentful Paint: the hero problem

On many web sites, the biggest component above the fold is a hero picture, hero history, or a gigantic headline block. Lighthouse will mark the biggest visual content material as the important thing detail for LCP.

Common reasons of gradual LCP:

- larger hero photos served in full size
- CSS and fonts delaying textual content rendering
- render blocking off scripts inside the head
- server reaction time that drifts whilst the web page grows

What works in actual initiatives is development a hero that plenty predictably. That manner correct sized pix, the usage of present day symbol codecs the place right, and making certain the very important CSS arrives early. If you use net fonts, pick a technique that doesn't stall the primary render.

2) Total Blocking Time: scripts that hog the principle thread

Total Blocking Time is where many Lighthouse disappointments come from. It sometimes capability the most thread is busy parsing, compiling, and operating JavaScript, customarily throughout initial load.

The “authentic lifestyles” styles I’ve visible:

- a number of analytics or tag manager hobbies firing at once
- sliders, animations, and chat widgets strolling immediately
- heavy page builder property that ship extra JavaScript than the layout needs
- duplicated libraries loaded with the aid of plugins

The restore is not often “flip the entirety off.” It’s approximately deferring what can wait, taking away what you do now not want, and guaranteeing 3rd birthday party scripts load in a managed means.

three) Cumulative Layout Shift: format that jumps

CLS is the Lighthouse ranking tied to visible balance. It occurs whilst images or materials do no longer reserve space when they load, or when facets manifest later and push content down.

This is well-liked when:

- pics lack width and peak attributes
- ads or embeds load after the layout
- fonts swap after render, replacing textual content sizes
- variety fields or accordions increase devoid of reserving space

A smart web site design southend undertaking treats CLS like a design requirement, no longer a developer aspect. Reserve area, set dimensions, and use steady typography.

4) Network and server reaction: the unglamorous hero

If your server reaction time is slow, Lighthouse efficiency suffers even in the event that your entrance end code is tidy. On shared internet hosting, this can be inconsistent based on visitors.

In Southend, I’ve considered websites that had been fantastic for years, then got quietly slower after updates, further plugins, or a database that wasn’t maintained. You do now not desire fancy infrastructure to improve [web design southend](#) this. You do want to measure and ideal bottlenecks.

Lighthouse will never be basically speed. Accessibility and top practices can have an impact on SEO outcomes too

Even if performance is your important precedence, Lighthouse additionally exams things which may impact how se’s interpret and how customers journey your content.

Accessibility: quickly reads beat puzzling interfaces

Accessibility in Lighthouse is partially approximately semantics and partially approximately usability. You would possibly see warnings about:

- missing or unsuitable heading structure
- comparison issues
- kind labels lacking ideal associations
- ARIA utilization errors

A bold mindset that works: deal with accessibility as element of conversion. Clear headings assist clients scan. Good kind labelling facilitates human beings comprehensive enquiries with no frustration. For web design southend clients, accessibility is mostly a ordinary win seeing that so much firms already choose their site to be elementary to apply.

Best practices and web optimization: less bloat, purifier code

Best practices canopy a variety of assessments, like insecure requests, unused code styles, and crawler same problems. search engine optimisation checks overlap with fundamentals: relevant title tags, meta descriptions, hyperlink constitution, and greater.

The key judgement call: don't chase each warning blindly. Some Lighthouse worries are low impact or rely upon how your website works. The more advantageous attitude is to fix those that still increase UX and maintainability.

A purposeful workflow for making improvements to Lighthouse devoid of breaking design

You would like a method that designers and developers can both belief. Here's what I propose when working with web design agency southend groups and users who wish measurable results.

Step 1: establish a baseline with useful testing

Run Lighthouse on the major pages, and do it more than as soon as. Results can fluctuate situated on caching, network simulation, and runtime prerequisites.

If workable, examine:

- cellphone and desktop
- not less than two page states, like sooner than interaction and after the page masses fully
- in a staging setting that mirrors production

Step 2: map Lighthouse findings to the web page template

Do now not treat every caution as a separate job. Lighthouse most of the time issues to the identical root motive with the aid of more than one indications.

For illustration, for those who see poor LCP and additionally multiplied script execution, you could have the same underlying challenge: heavy hero media plus scripts loading early.

Step 3: prioritise variations by using impression and risk

A small symbol format improve has low danger. Swapping a slider library could have bigger chance. Redesigning the hero segment for balance is meaningful, but it demands coordination between layout and dev.

If you might be operating with web designers in southend and wish more beneficial Lighthouse rankings soon, focal point on low danger, prime impression fixes first, then pass into structural innovations.

Step four: ensure overall performance and usefulness together

After changes, verify the web page visually on a couple of gadgets. Lighthouse won't be able to inform you that your buttons now sense more durable to faucet, or that your typography loses its hierarchy on small displays.

This is where the alternate off appears. You can lower weight and scripts, but if you happen to eliminate too much or swap timing incorrectly, the web page might sense empty or complicated.

The fixes that quite often supply Lighthouse good points fast

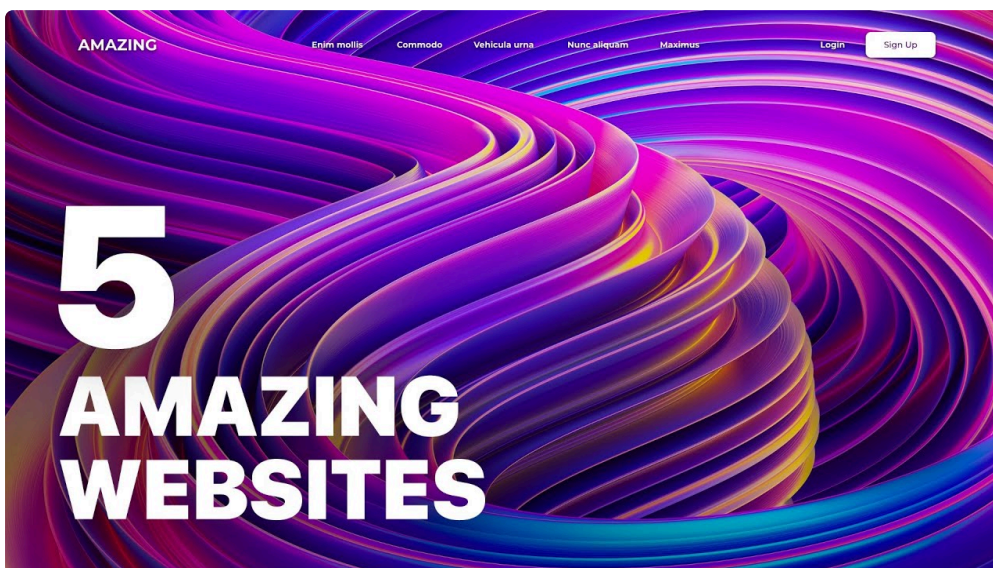
You merely need two issues to improve Lighthouse quickly: objective the largest web page payload individuals and avert the primary render fresh.

Here are the different types of modifications that time and again provide outcome on web design southend tasks.

Image managing that respects both quality and speed

Optimise graphics as portion of the design manner, no longer as an afterthought. That potential relevant cropping for every single breakpoint and loading the properly dimension photograph per instrument.

If a client wants a "top rate" seem to be, you could possibly still do it with optimisation. Compressed, appropriately sized portraits can glance significant while exported successfully. The limitation is while the similar widespread asset is used all over.



Also look ahead to historical past pix in CSS. They can pass some of the responsive snapshot benefits except you address them closely.

Fonts that do not block the primary render

Web fonts will not be robotically bad, but they may extend textual content rendering if configured poorly. The accurate method relies upon for your font desire and your design requirements.

A well-known mindset is to be certain that fonts load with out freezing the page. You can take a look at font loading behaviour and confirm that the textual content appears effortlessly and remains sturdy, reducing CLS.

Script control: what lots, while it rather a lot, and what it breaks

Third birthday party scripts are a prime Lighthouse variable. Chat widgets, overview badges, ad scripts, tag manager setups, and monitoring pixels can upload to script execution and community load.

You can nonetheless use those resources, yet do it intentionally:

- load scripts after the principle content material is interactive in which possible
- avert loading scripts on each web page if they may be handiest essential on a subset
- audit which plugins add replica libraries

If you would like an online layout service provider southend to enhance Lighthouse ratings, insist on an audit of 0.33 birthday celebration dependencies, now not just middle code tidy united states

Layout steadiness: reserve area, cease the jumping

CLS is commonly fixable with hassle-free, disciplined design guidelines: set express dimensions on pictures, reserve area for embeds, and ensure that formulation mount predictably.

It's tempting to conceal those main points during layout on account that they do no longer educate up until eventually a slow machine masses slowly. But if you've visible a structure shift damage a person's attempt to click on a CTA, you forestall treating CLS as elective.

Where teams cross unsuitable at the same time chasing Lighthouse numbers

I've considered an awful lot of attempts that technically get better Lighthouse but nevertheless fail the website online's process.

Oversimplifying pages until they convert worse

A generic mistake is stripping away content material blocks since they damage functionality. But the content material will likely be precisely what convinces company to pick out you. If you dispose of have faith indications too aggressively, conversion drops.

Instead, avert the content, cut weight, and cargo it effectively. You can many times lazy load non serious sections devoid of disposing of them.

Optimising basically the homepage

Lighthouse can seem to be sizeable on the homepage and nonetheless be a situation on carrier pages in which clients land from seek. If your carrier pages are sluggish, you would possibly not believe the anguish straight, but you can experience it in enquiries.

Run Lighthouse throughout templates, now not just one page.

Treating Lighthouse warnings as projects one could examine off forever

Some matters are structural, and fixes can exchange with plugin updates or new advertising banners. Performance isn't always set and neglect. It wants ownership.

The precise mind-set is continual development with regression exams, notably if you add new scripts, new landing pages, or new photograph campaigns.

A quick optimisation list you possibly can in actual fact use

If you wish to chat to a web design business enterprise southend or a website designers southend staff about Lighthouse growth in a way that will get outcome, use a list like this. Keep it practical and web page targeted.

- cut down the preliminary payload, quite pics and 0.33 occasion scripts
- make sure that your hero content material masses straight away and predictably for mobile
- reserve house for portraits and embeds to manipulate structure shifts
- establish font loading so text renders rapid and remains stable
- re-run Lighthouse on carrier templates after each significant change

This is the reasonably paintings that improves true reports and, definite, Lighthouse scores tend to apply.

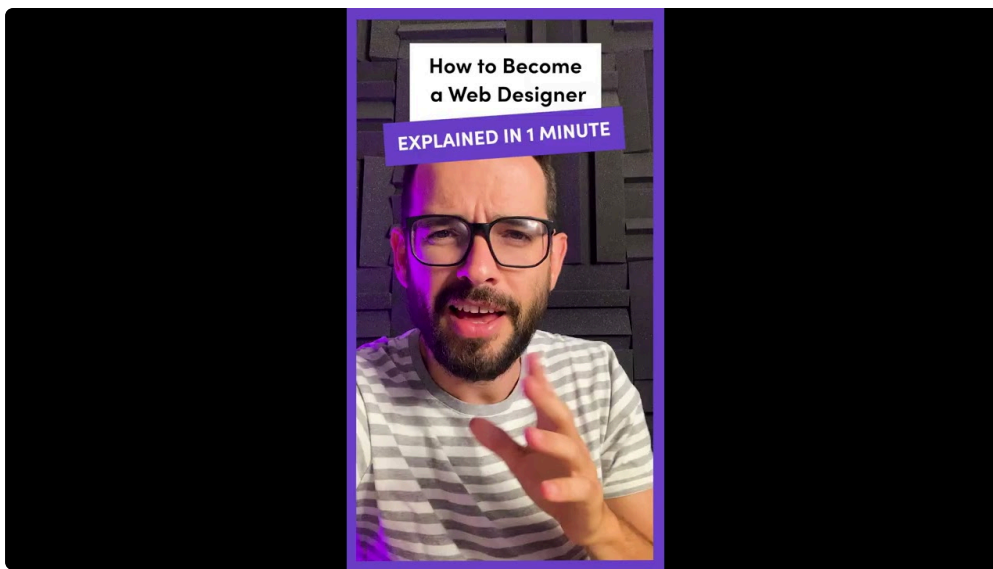
Choosing the perfect native companion in Southend for efficiency-minded web design

When you appoint internet layout southend products and services, you're no longer just procuring pages. You're buying judgement, change offs, and the ability to enforce optimisations without wrecking the layout.



A suitable web layout corporation southend needs to give you the option to discuss efficiency in plain language. They needs to dialogue about which metrics subject, what root reasons are possible, and the way they may verify.

When you interview a provider, seek for alerts like:



- they use staging and degree transformations in place of guessing
- they ask what your enquiry activity seems to be like
- they notice template systems, not just one-off pages
- they care approximately cellular functionality and no longer in simple terms computer previews
- they're able to provide an explanation for how they cope with pics, fonts, scripts, and structure stability

You do no longer want them to vow just right ratings. You desire them to commit to a means that assists in keeping performance from drifting as the online page evolves.

Metrics you have to watch alongside Lighthouse

Lighthouse tells you what the browser does in managed runs. Your analytics tells you what users definitely do.

If you're severe about internet layout southend functionality, pair Lighthouse with just a few sensible indications:

- leap price or engagement fee on mobile
- time to first significant interaction, if one could measure it
- conversion charge on enquiry forms
- scroll depth or CTA clicks, above all on long landing pages

Sometimes Lighthouse seems "alright" however conversion is deficient considering that the content material or sort expertise is inaccurate. Other instances Lighthouse is mediocre yet conversion improves anyway considering that visitors are centered and patient. Use metrics mutually, no longer in isolation.

A genuine commerce off: hero video versus a fast first load

Let's make this concrete. A regional industrial could desire a hero video on their homepage. Videos can glance superb, but they're able to payment performance.

In one Southend assignment I labored on, the consumer adored the video. We confirmed a heavy autoplay mindset, and the efficiency ranking dropped hard. We then switched to a process that loaded a lightweight poster graphic temporarily, deferred video loading except after the preliminary render, and ensured the page remained interactive.

The exchange off turned into now not "no video ever." The industry off turned into "video arrives when it should still, no longer whilst the page continues to be scuffling with to load core content."

Lighthouse advanced on the grounds that LCP grew to be the poster other than awaiting video and heavy scripts. Users nonetheless acquired the video knowledge presently after, and the page felt smoother other than behind schedule.

How to avoid Lighthouse enhancements from disappearing later

The greatest enemy of overall performance is go with the flow. A web site is rarely static. New campaigns start. New plugins get put in. New tracking codes happen. New banners get extra for promotions.

To retain Lighthouse ratings transferring within the properly course:

- audit 0.33 get together scripts once you add new advertising tools
- hold snap shots optimised at the aspect of upload
- restrict reintroducing complete length sources into templates
- run quick performance tests ahead of and after important releases

A mature cyber web layout southend on sea build process involves regression testing and a light-weight tracking recurring. You do no longer need to obsess everyday, but you do want a time table that forestalls "silent slowdowns."

What a top Lighthouse rating could suppose desire to a visitor

A top score is simply not a badge you hold at the workplace wall. It will have to demonstrate up as:

- text and key content appearing quickly
- pictures not popping in at random sizes
- buttons staying where customers predict them
- fewer pauses when scrolling or tapping navigation
- the web page feeling responsive on cell networks that aren't perfect

If your website online feels snappy to a visitor in Southend on a factual phone, Lighthouse is more likely to validate your preferences. If your web page nevertheless feels sluggish, Lighthouse can at times lag at the back of what you realize is occurring. That's the nuance that separates checking out from lived feel.

Final theory: Lighthouse rewards craft, not shortcuts

Designing for Google Lighthouse rankings in Southend is just not approximately chasing the top quantity one could. It's approximately construction with field, making functionality and steadiness part of the layout manner, and refusing to deal with third birthday celebration bloat as innocent.

If you would like a web design southend that performs and converts, construct for the consumer first, then permit Lighthouse ascertain your paintings. And if you happen to hire information superhighway layout business southend partners or information superhighway design agency southend teams, make a choice ones that may provide an explanation for how they'll increase the pages that clearly topic on your trade.

That mix, craft plus testing, is how you get rapid pages that also seem like your brand, not like a stripped prototype.